



Glover Green Design

Prepared for: The Town of Glover

Prepared by: Ceilidh Galloway-Kane, Ecotone Landscapes & Tree Care and Barnabas Kane, New West Workshop



ecotone
LANDSCAPES
& TREE CARE



Project Narrative

This project proposal is focused on the segment from the Heart of Glover Plan, which refines and develops the town green. The concept plan includes revitalizing the town green by: relocating a monument, burying or re-routing overhead utility lines, creating a new green space and landscaping, installing ADA-compliant walkways, and improving access/reclamation of the river area. The project also calls for improved parking and vehicular/bike access, infrastructure for a future pavilion, EV chargers, and other amenities.

The following excerpt is from the Heart of Glover Village Plan created in 2022 by the planning commission, consultants DuBois & King, and funded by the Vermont Agency of Commerce and Community Development: "The Town Green concept envisions how the Glover Green could be improved to become more accessible, host more varied events, and become a greater, more well utilized community resource. In addition to on-site improvements, four major improvements to the lands surrounding the Green could improve its overall value and function as a space for community gathering and recreation."

Main Glover Green needs from the Heart of Glover Plan:

- Increasing year-round use and overall space flexibility
- Provide greater accessibility to a variety of users
- Enhance privacy for adjacent neighbors



Many, many people have been involved in this project including town employees, community members, architects, landscape architects, and civil engineers to complete the design, technical specifications, permitting, and bid documents. Our design goal for the Glover Green is to create a vibrant, welcoming, and functional outdoor space for all residents and visitors while supporting biodiversity. We look forward to hearing feedback from the residents of Glover!

Respectfully - Ceilidh Galloway-Kane & Barnabas Kane

Glover Green Project Proposal Contents:

Design Options:

- Version 1 with Key
- Version 2

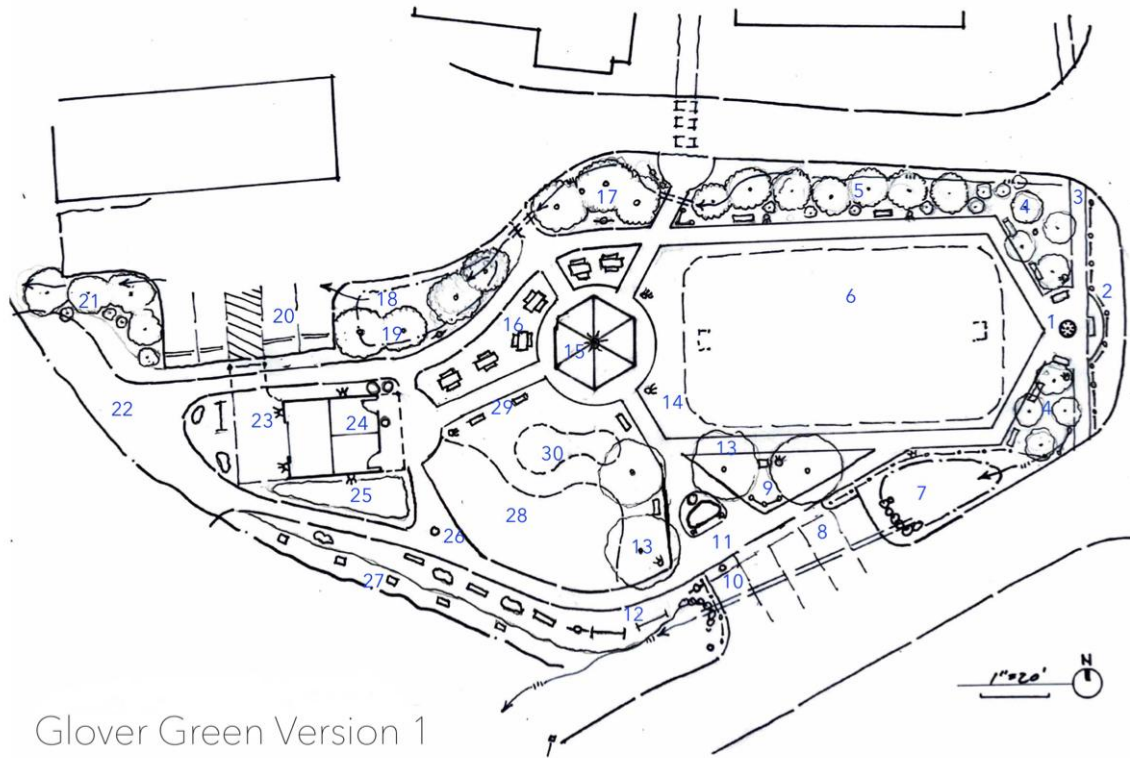
Glover Green Design Elements:

- Presence on Route 16
- Main recreation & market field
- ADA accessible paths
- Evergreen Planting for Privacy
- Event Pavilion & Picnic Area
- Parking, Bike racks & EV Station
- Veterans Memorial
- Native plantings for basins & bio-swales
- Fire Department Building Usage
- Barton River frontage and reclamation
- Nature Exploration Area

Examples and Details:

- Benches
- Signage & Kiosks
- Lighting & Bike Racks
- Tree & Shrub Species
- Bio-swale Planting Detail



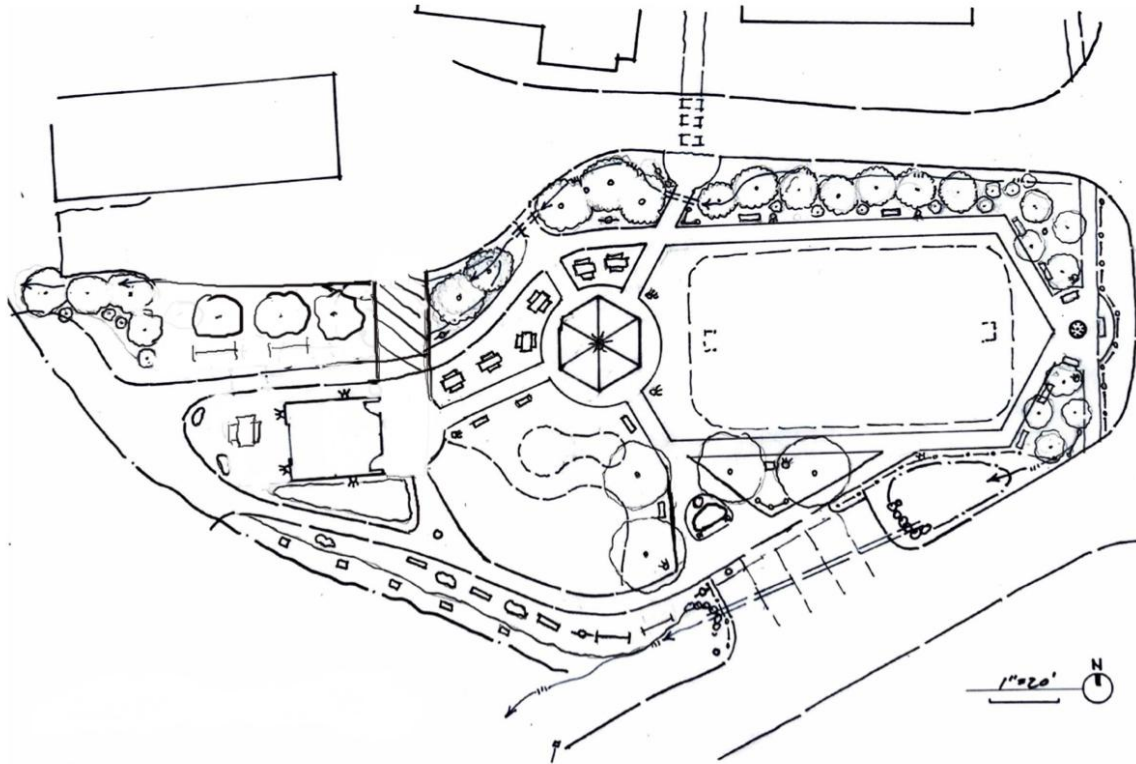


Glover Green Version 1

2.07.24

Prepared by: Ecotone Landscapes & Tree Care and New West Workshop

Key: 1 Seating area w/Mill Stone, 2 Fence, 3 Hardscape paths, 4 Crabapple planting, 5 Cedar, Balsam, Shrub planting, 6 Recreation & Market Field, 7 Pollinator garden & basin, 8 Parking, 9 Kiosk & Water Fountain, 10 EV Station, 11 Veterans Rock & Flag, 12 Bike Racks, 13 Honeylocust Trees, 14 Lighting, 15 Pavilion, 16 Picnic Area, 17 Larch Trees, 18 Rain Garden, 19 Cedar Trees, 20 Parking, 21 Larch Trees, 22 River Frontage, 23 Fire Dept. Entrance, 24 Future WC, 25 Blueberries, 26 Directional Sign, 27 Birdhouses & Woods, 28 Nature Exploration Area, 29 Benches, 30 Kids Knoll



Glover Green - Version 2

Prepared by: Ecotone Landscapes & Tree Care and New West Workshop

*Version 2 assumes no use of the existing fire department building and removes the Northern Parking. All other design items are the same as Version 1



Presence on Route 16

We wanted the area of the Green along route 16 to be both welcoming as well as safe and private for folks using the space. In this image we lifted up the Crabapple canopy so you could see the action in the space. A split rail fence adds some formality and a physical barrier to keep users out of the road. An ADA compliant gravel path connects to the future sidewalk project. We recommend adding a concrete bump out/ramp where the path connects to the road. Crabapple trees provide shade, multi-season interest, and a screen to the rt 16. Between the fence and the road are planted a variety of wildflowers and native grasses. The sitting circle features a mill stone as a nod to the Runaway Pond Park and benches.

Main Recreation & Market Field

At the center of the Glover Green is the recreation and market field. This space is big enough for a hockey rink in the winter, a kids soccer game, and the Farmers Market. The gravel path creates a perimeter for the space and will be flush to the turf to allow flexibility of Market set up. Light posts will also ideally have outlets for vendors as needed.



ADA Accessible Paths

The paths have been designed to lead visitors safely around the space from the street, Nursing Home, parking lots, and to key features in the design. The material is stay-mat on top of a gravel bed that can be easily maintained and refreshed. We also recommend (depending on budget) using an edging material such as pavers to keep grass and plants from the on the paths.

Evergreen Planting for Privacy

The planting to the north is a diverse mix of conifers and shrubs to create privacy and screen for the neighbors including: Balsam, Cedars, Larch, Red Osier Dogwood, and Serviceberry. This planting assumes that the current overhead power line would either be moved or buried under the walking path.



Event and Picnic Pavilion

In the design we made the pavilion round so that it would be welcoming and accessible from multiple sides. As a 20' diameter space it will be large enough for picnics, concerts, meetings, etc. Ideally the pavilion would be a timber frame or natural wood construction and would have interior lighting and an outlet.

This is an inspirational image from Highland City Park, Utah.



Parking, Bike Racks & EV Station

In Version 1 of the design there are 9 parking spaces including a spot for an EV station. We also recommend making the north parking lot handicap parking and/or drop off only to reduce car traffic for neighbors. Throughout the designs there are locations for bike racks. Most bike racks require concrete footings to keep them in place. There are lots of creative bike rack options like the one shown here.

Veterans Memorial

We designed the Glover Green so that the Veterans Memorial welcomes visitors at the 'main entrance' by the southern parking lot. The Veterans stone will be relocated to this area and features a perimeter garden for annuals, uplighting, and a flag pole behind the stone. This area will also feature a Honeylocust grove on either side of the memorial. These trees are ideal for compacted soils, drought tolerant, have lovely yellow fall color, and an upright canopy, while not getting too big for the space. The Sunburst Honeylocust variety is thornless and pod-less making it an ideal fit.



Native Plantings for Basins & Bio-Swales

Around the perimeter of the Glover Green there are slight swales and basins for water run off. In these spaces plantings of native grasses and perennial flowers support pollinators & wildlife while also filtering water. Informational signs let visitors know why these areas are beneficial. These areas will require annual maintenance.



Fire Department Building Usage

Version 1 of the design assumes a partnership to use a portion of the fire department building and to renovate the building as needed to retain some storage and access for the department while also housing storage for the Glover Green and at least one bathroom. Storage and a bathroom facility would make a big difference for accessibility and use of the space. Adding a small porch would also protect trash cans and shed water away from the doors.

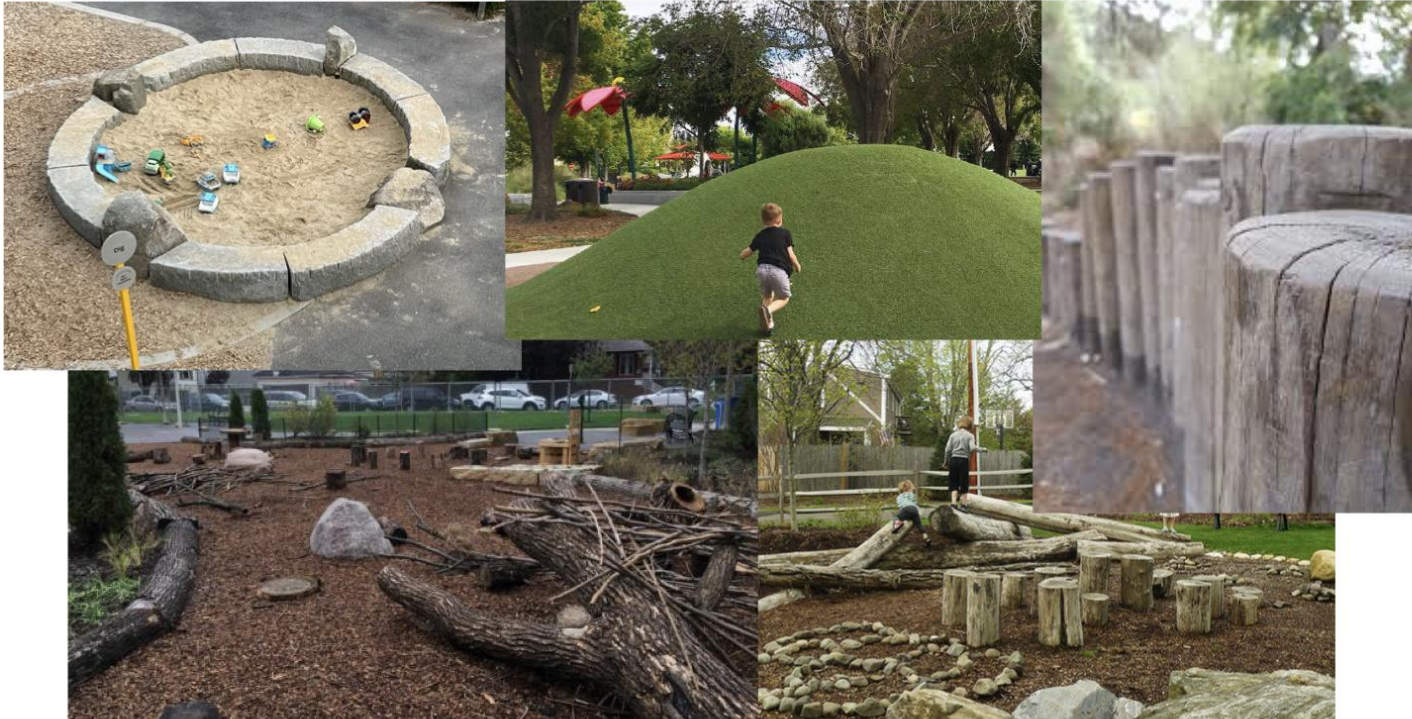
Barton River Frontage and Reclamation

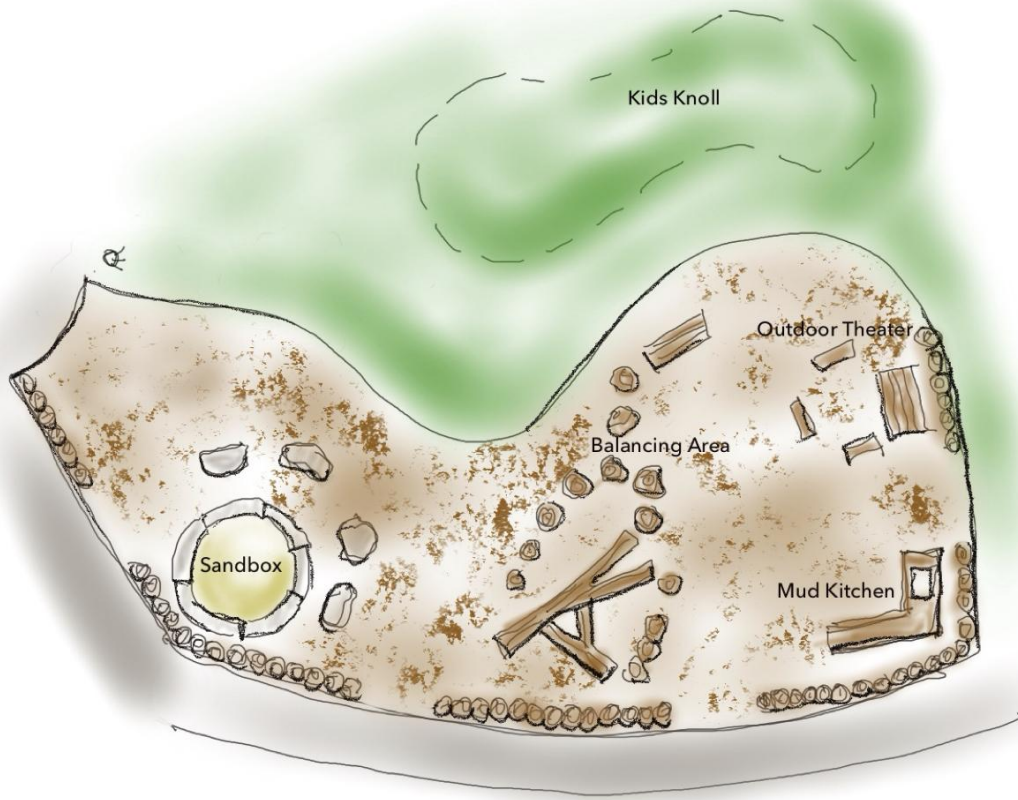
Currently the area along the river bank is not easily accessible and has a variety of downed trees, invasive Japanese knot weed to the north, and is a bit of a mess. We recommend that the town partner with the Memphremagog Watershed Association and Northwoods Stewardship Center to identify a plan for reclaiming this area. The flood line (as shown in the survey) is at the top of the bank pictured here.



Nature Exploration Area

This area is not a playground but is a safe space for young children to play with natural elements ex: logs for sitting, sandpit, simple outdoor kitchen, balance log, etc. It is also designed to be flexible and adaptable. The area would be covered with wood chips annually or semi-annually. The space between the mulch and turf lawn would be separated by logs standing upright and varying in height (as pictured far left). The Kids Knoll is a small rise just above the area for rolling, sitting, etc. The following are examples of the features of this space and below is the space design.





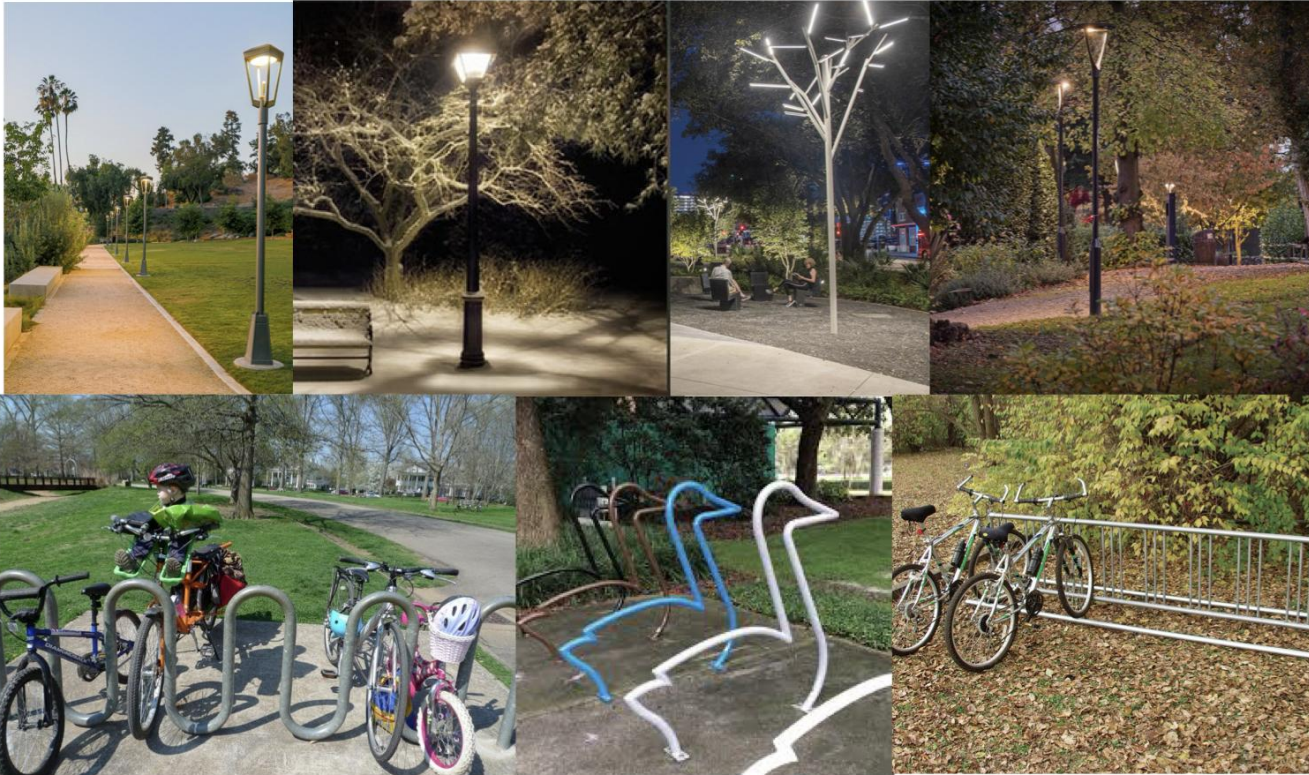
Bench Examples



Signage & Kiosk Examples

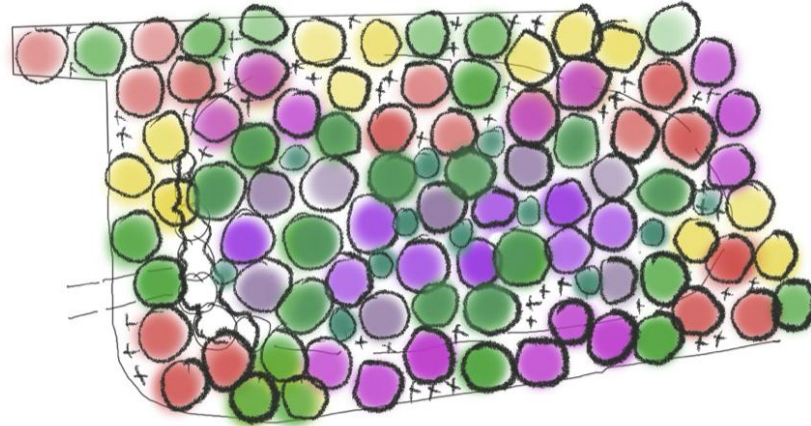



Lighting and Bike Rack Examples







Bio-Swale Planting Detail

Glover Green Pollinator Garden & Bio-swale




- | | | | |
|--|--|---|---|
|  | <i>Rudbeckia hirta</i>
Black-eyed Susan |  | <i>Narcissus</i>
Daffodil |
|  | <i>Monarda 'Jacob Cline'</i>
Bee Balm |  | <i>Scirpus cyperinus</i>
Wool-Grass |
|  | <i>Eupatorium purpureum</i>
Joe-Pye Weed |  | <i>Poaceae cynodonteae</i>
Blue Gramma Grass |
|  | <i>Aster novi-beigii</i>
New York Aster |  | <i>Iris versicolor</i>
Blue Flag Iris |
|  | <i>Echinacea purpurea</i>
Purple Coneflower | | |

Deciduous Trees

Latin Name, Common Name, Size	Image	Latin Name, Common Name, Size	Image
<p><i>Amelanchier canadensis</i> Shadblow Serviceberry 15-20' x 8-12'</p>		<p><i>Larix laricina</i> Eastern Larch 40-60' x 15 - 30'</p>	
<p><i>Gleditsia triacanthos</i> 'Sunburst' Sunburst Honeylocust 45' x 30'</p>		<p><i>Malus</i> 'Donald Wyman' Donald Wyman Crabapple 20' x 25'</p> <p><i>Malus</i> 'Harvest Gold' Harvest Gold Crabapple 18' x 25'</p> <p>Both with white flowers</p>	

Evergreen Trees

Latin Name, Common Name, Size	Image	Latin Name, Common Name, Size	Image
<i>Abies balsamea</i> Balsam Fir 40' x 20'		<i>Thuja occidentalis</i> 'Nigra' American Arborvitae 30' - 10'	

Shrubs

Latin Name, Common Name, Size	Image	Latin Name, Common Name, Size	Image
<i>Cornus alba</i> Red Stem Dogwood 6-9' x 6-9'		<i>Vaccinium corymbosum</i> Blueberry 4-6' x 4-5'	