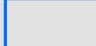




Legend

-  1000-yr Storm Day Dam Failure Inundation Boundary
-  1000-yr Storm Day No Dam Failure Inundation Boundary
-  Sunny Day No Dam Failure Inundation Boundary

Source: Esri, Maxar, Earthstar Geographics, and the GIS User Community

CLIENT:
VTDEC - DAM SAFETY
WATER INVESTMENT DIV.
1 NATIONAL LIFE DRIVE
MONTPELIER, VT 05620



INUNDATION MAP
SHADOW LAKE DAM
Index Map

DESIGNED BY:
AF

APPROVED BY:

DRAWN BY:
AF

CHECKED BY:

PROJECT NO:
127862L1

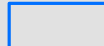
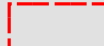

DATE:
01/30/2023

FIGURE NO:

INDEX



Legend

-  1000-yr Storm Day Dam Failure Inundation Boundary
-  1000-yr Storm Day No Dam Failure Inundation Boundary
-  Sunny Day No Dam Failure Inundation Boundary

Notes:
 Listed depths, velocities, and arrival times are in reference to 1000-YR (Storm Day Dam Failure).
 Depths are measured in reference to adjacent native grade represented by the LIDAR DEM.
 Inundation, depths, velocities, and arrival times are approximate
 (derived from computer simulation) and may or may not reflect actual flood conditions.

Stone Shore Rd
 Depth (Max): 2.1 ft
 Velocity (Max): 4.9 ft/sec
 Arrival Time: 15min
 Arrival Time (Max): 37min

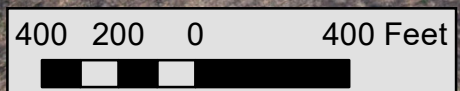
Shadow Lake Dam
 Depth (Max): 5.3 ft
 Velocity (Max): 6.5 ft/sec
 Arrival Time: Pre-failure
 Arrival Time (Max): 0

Shadow Lake Dam

Culv 1

Shadow Lake Brook

Quarry Hill Rd



CLIENT:
 VTDEC - DAM SAFETY
 WATER INVESTMENT DIV.
 1 NATIONAL LIFE DRIVE
 MONTPELIER, VT 05620



**INUNDATION MAP
 SHADOW LAKE DAM PROJECT**

DESIGNED BY:
 AF

APPROVED BY:

DRAWN BY:
 AF

CHECKED BY:

PROJECT NO:
 127862L1

DATE:
 01/30/2023

FIGURE NO:

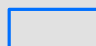
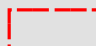

1

Source: Esri, Maxar, Earthstar Geographics, and the GIS User Community

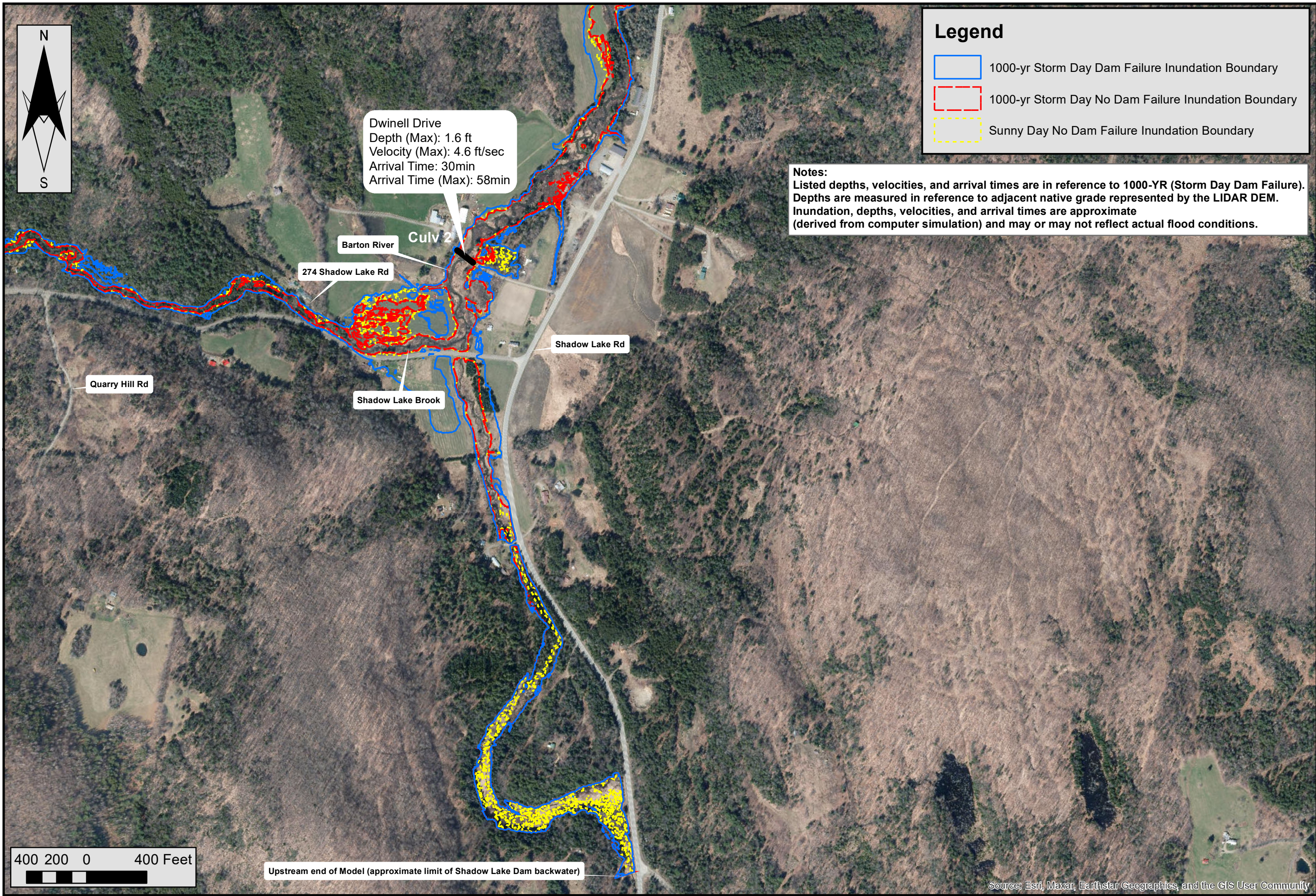


Dwinell Drive
 Depth (Max): 1.6 ft
 Velocity (Max): 4.6 ft/sec
 Arrival Time: 30min
 Arrival Time (Max): 58min

Legend

-  1000-yr Storm Day Dam Failure Inundation Boundary
-  1000-yr Storm Day No Dam Failure Inundation Boundary
-  Sunny Day No Dam Failure Inundation Boundary

Notes:
 Listed depths, velocities, and arrival times are in reference to 1000-YR (Storm Day Dam Failure).
 Depths are measured in reference to adjacent native grade represented by the LIDAR DEM.
 Inundation, depths, velocities, and arrival times are approximate
 (derived from computer simulation) and may or may not reflect actual flood conditions.



CLIENT:
 VTDEC - DAM SAFETY
 WATER INVESTMENT DIV.
 1 NATIONAL LIFE DRIVE
 MONTPELIER, VT 05620



**INUNDATION MAP
 SHADOW LAKE DAM PROJECT**

DESIGNED BY:
 AF

APPROVED BY:

DRAWN BY:
 AF

CHECKED BY:

PROJECT NO:
 127862L1

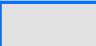


DATE:
 01/30/2023

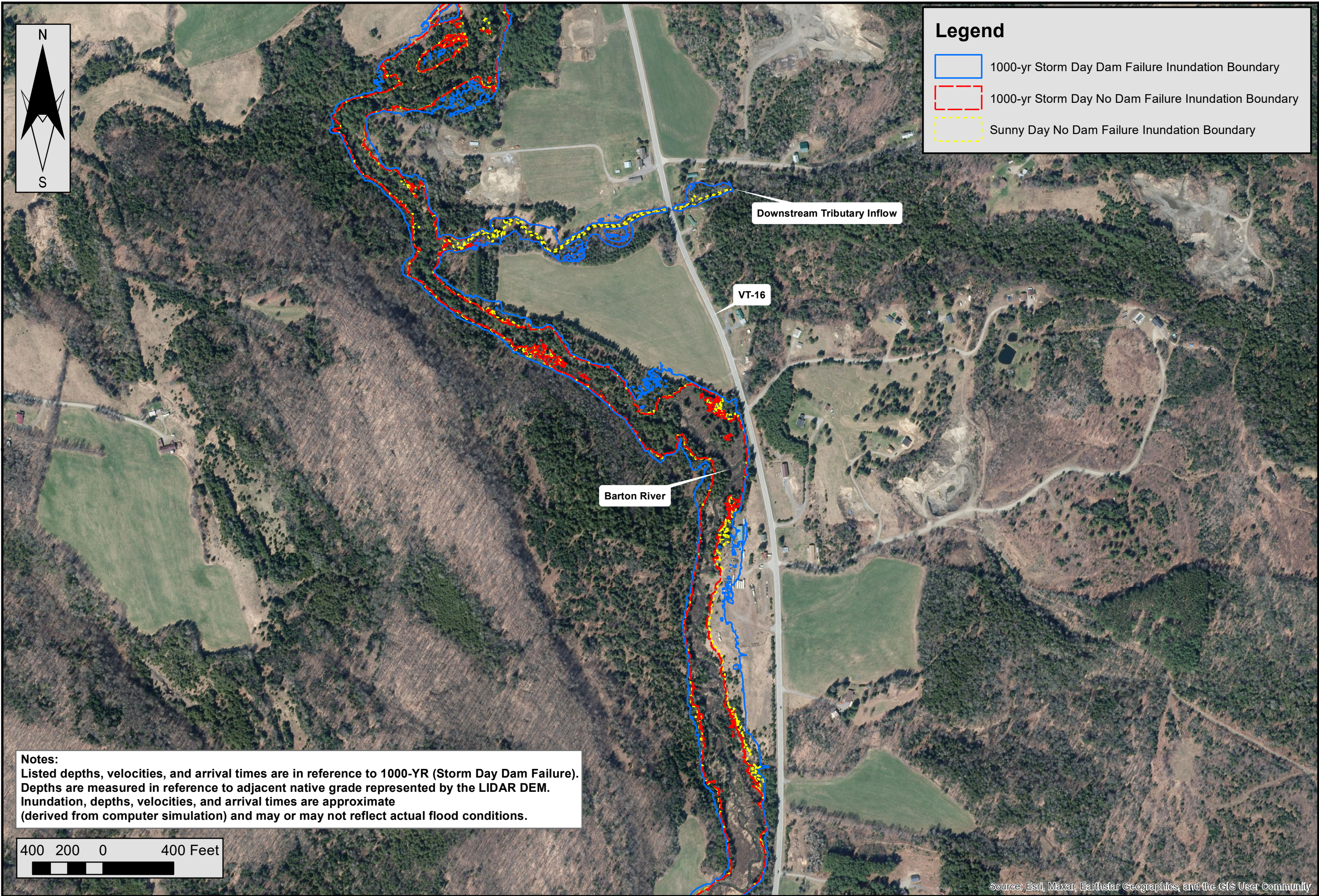
FIGURE NO:

Source: Esri, Maxar, Earthstar Geographics, and the GIS User Community

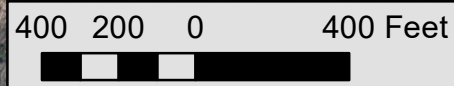


Legend

-  1000-yr Storm Day Dam Failure Inundation Boundary
-  1000-yr Storm Day No Dam Failure Inundation Boundary
-  Sunny Day No Dam Failure Inundation Boundary



Notes:
 Listed depths, velocities, and arrival times are in reference to 1000-YR (Storm Day Dam Failure).
 Depths are measured in reference to adjacent native grade represented by the LIDAR DEM.
 Inundation, depths, velocities, and arrival times are approximate
 (derived from computer simulation) and may or may not reflect actual flood conditions.



CLIENT:
 VTDEC - DAM SAFETY
 WATER INVESTMENT DIV.
 1 NATIONAL LIFE DRIVE
 MONTPELIER, VT 05620



**INUNDATION MAP
 SHADOW LAKE DAM PROJECT**

DESIGNED BY:
 AF

APPROVED BY:

DRAWN BY:
 AF

CHECKED BY:

PROJECT NO:
 127862L1

DATE:
 01/30/2023

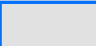


FIGURE NO:

3



Downstream Tributary Inflow

Legend

-  1000-yr Storm Day Dam Failure Inundation Boundary
-  1000-yr Storm Day No Dam Failure Inundation Boundary
-  Sunny Day No Dam Failure Inundation Boundary

Aldrich Ln
 Depth (Max): 2.9 ft
 Velocity (Max): 3.2 ft/sec
 Arrival Time: 1hr, 30min
 Arrival Time (Max): 1hr, 52min

Culv 4

Barton River

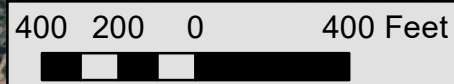
VT-16

Heights Rd

Perron Hill Rd
 Depth (Max): 1.1 ft
 Velocity (Max): 5.4 ft/sec
 Arrival Time: 1hr, 15min
 Arrival Time (Max): 1hr, 42min

Culv 3

Notes:
 Listed depths, velocities, and arrival times are in reference to 1000-YR (Storm Day Dam Failure). Depths are measured in reference to adjacent native grade represented by the LIDAR DEM. Inundation, depths, velocities, and arrival times are approximate (derived from computer simulation) and may or may not reflect actual flood conditions.



CLIENT:
 VTDEC - DAM SAFETY
 WATER INVESTMENT DIV.
 1 NATIONAL LIFE DRIVE
 MONTPELIER, VT 05620



**INUNDATION MAP
 SHADOW LAKE DAM PROJECT**

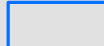
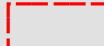

DESIGNED BY:
 AF
 APPROVED BY:

DRAWN BY:
 AF
 CHECKED BY:

PROJECT NO:
 127862L1
 DATE:
 01/30/2023
 FIGURE NO:
4



Legend

-  1000-yr Storm Day Dam Failure Inundation Boundary
-  1000-yr Storm Day No Dam Failure Inundation Boundary
-  Sunny Day No Dam Failure Inundation Boundary

CLIENT:
 VTDEC - DAM SAFETY
 WATER INVESTMENT DIV.
 1 NATIONAL LIFE DRIVE
 MONTPELIER, VT 05620



INUNDATION MAP
SHADOW LAKE DAM PROJECT

DESIGNED BY:
 AF
 APPROVED BY:

DRAWN BY:
 AF
 CHECKED BY:

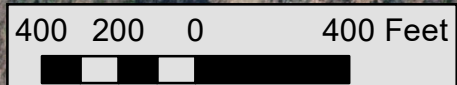
PROJECT NO:
 127862L1

DATE:
 01/30/2023

FIGURE NO:

5

Notes:
 Listed depths, velocities, and arrival times are in reference to 1000-YR (Storm Day Dam Failure).
 Depths are measured in reference to adjacent native grade represented by the LIDAR DEM.
 Inundation, depths, velocities, and arrival times are approximate
 (derived from computer simulation) and may or may not reflect actual flood conditions.



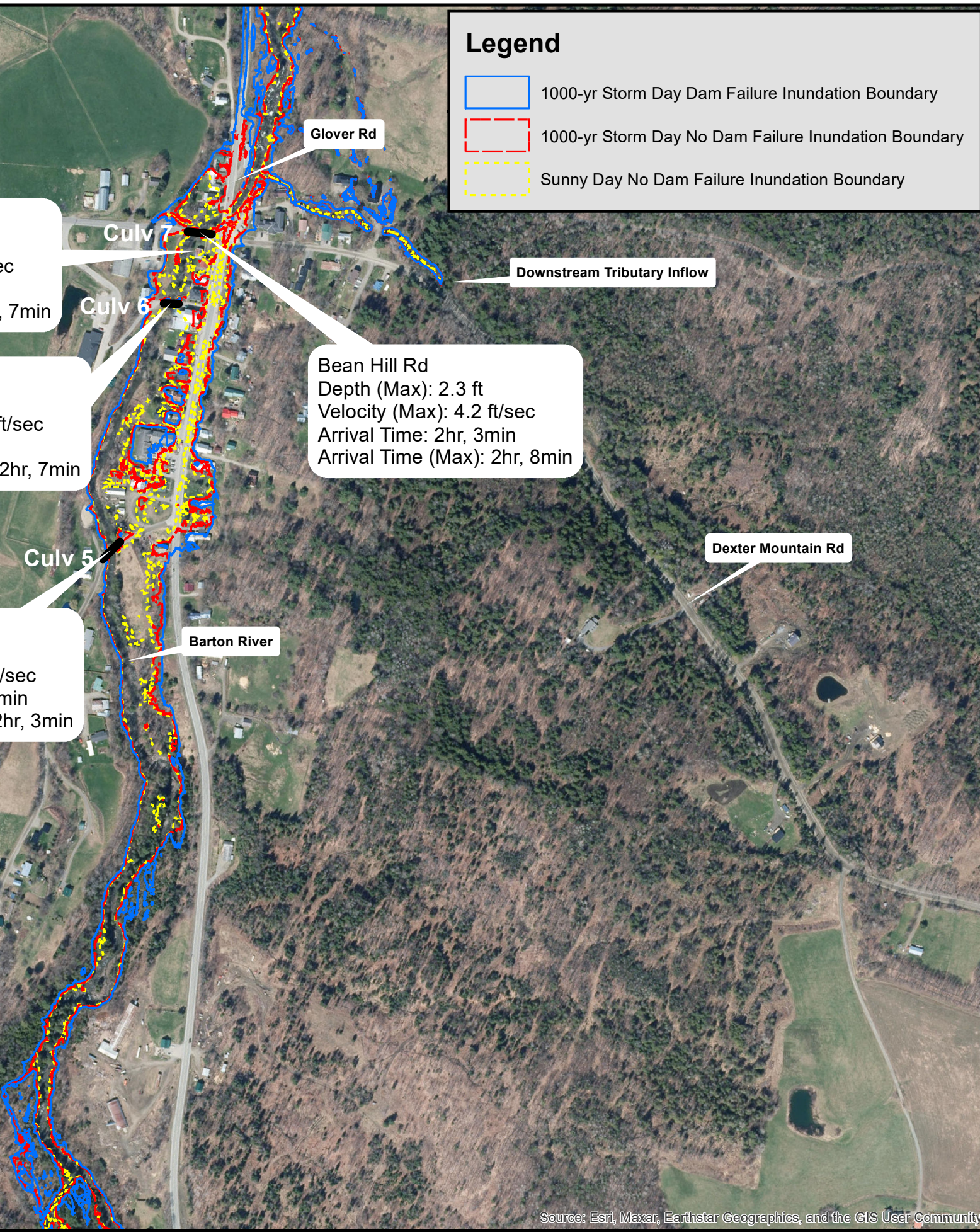
Source: Esri, Maxar, Earthstar Geographics, and the GIS User Community

9 Bean Hill Rd, Glover
 Depth (Max): 6.4 ft
 Velocity (Max): 2.5 ft/sec
 Arrival Time: 2hr, 4min
 Arrival Time (Max): 2hr, 7min

School St.
 Depth (Max): 2.3 ft
 Velocity (Max): 5.2 ft/sec
 Arrival Time: 2hr
 Arrival Time (Max): 2hr, 7min

Still Hill Rd
 Depth (Max): 2.2 ft
 Velocity (Max): 4.7 ft/sec
 Arrival Time: 1hr, 45min
 Arrival Time (Max): 2hr, 3min

Bean Hill Rd
 Depth (Max): 2.3 ft
 Velocity (Max): 4.2 ft/sec
 Arrival Time: 2hr, 3min
 Arrival Time (Max): 2hr, 8min





Legend

- 1000-yr Storm Day Dam Failure Inundation Boundary
- 1000-yr Storm Day No Dam Failure Inundation Boundary
- Sunny Day No Dam Failure Inundation Boundary

CLIENT:
 VTDEC - DAM SAFETY
 WATER INVESTMENT DIV.
 1 NATIONAL LIFE DRIVE
 MONTPELIER, VT 05620



**INUNDATION MAP
 SHADOW LAKE DAM PROJECT**

DESIGNED BY:
 AF

APPROVED BY:

DRAWN BY:
 AF

CHECKED BY:

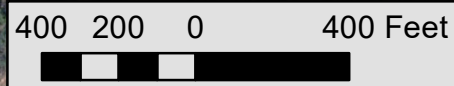
PROJECT NO:
 127862L1

DATE:
 01/30/2023

FIGURE NO:

6

Notes:
 Listed depths, velocities, and arrival times are in reference to 1000-YR (Storm Day Dam Failure). Depths are measured in reference to adjacent native grade represented by the LIDAR DEM. Inundation, depths, velocities, and arrival times are approximate (derived from computer simulation) and may or may not reflect actual flood conditions.



Source: Esri, Maxar, Earthstar Geographics, and the GIS User Community

1770 Glover Rd, Barton
 Depth (Max): 4.7 ft
 Velocity (Max): 2.4 ft/sec
 Arrival Time: 2hr, 15min
 Arrival Time (Max): 2hr, 31min

Fulton Ln
 Depth (Max): 3.3 ft
 Velocity (Max): 4.8 ft/sec
 Arrival Time: 2hr, 15min
 Arrival Time (Max): 2hr, 22min

2513 Glover Rd, Glover
 Depth (Max): 5.1 ft
 Velocity (Max): 2.2 ft/sec
 Arrival Time: 2hr, 12min
 Arrival Time (Max): 2hr, 14min

Sargent Ln
 Depth (Max): 2.8 ft
 Velocity (Max): 4.2 ft/sec
 Arrival Time: 2hr, 10min
 Arrival Time (Max): 2hr, 14min

Talbot Ln
 Depth (Max): 1.8 ft
 Velocity (Max): 4.1 ft/sec
 Arrival Time: 2hr, 7min
 Arrival Time (Max): 2hr, 12min

26 Talbot Ln, Glover
 Depth (Max): 6 ft
 Velocity (Max): 2.7 ft/sec
 Arrival Time: 2hr, 6min
 Arrival Time (Max): 2hr, 11min

Barton River

Culv 12

I-91N

I-91S

Downstream Tributary Inflow

Culv 10

Culv 9



Legend

- 1000-yr Storm Day Dam Failure Inundation Boundary
- 1000-yr Storm Day No Dam Failure Inundation Boundary
- Sunny Day No Dam Failure Inundation Boundary

Barton River

July 15

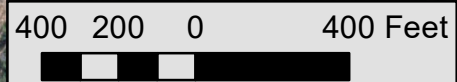
Interstate 91
 Depth (Max): 1.1 ft
 Velocity (Max): 0.2 ft/sec
 Arrival Time: 3hr, 15min
 Arrival Time (Max): 5hr, 6min

Glover Rd

I-91S

I-91N

Notes:
 Listed depths, velocities, and arrival times are in reference to 1000-YR (Storm Day Dam Failure). Depths are measured in reference to adjacent native grade represented by the LIDAR DEM. Inundation, depths, velocities, and arrival times are approximate (derived from computer simulation) and may or may not reflect actual flood conditions.



CLIENT:
 VTDEC - DAM SAFETY
 WATER INVESTMENT DIV.
 1 NATIONAL LIFE DRIVE
 MONTPELIER, VT 05620



**INUNDATION MAP
 SHADOW LAKE DAM PROJECT**

DESIGNED BY:
AF

APPROVED BY:

DRAWN BY:
AF

CHECKED BY:

PROJECT NO:
127862L1

DATE:
01/30/2023

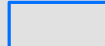
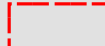

FIGURE NO:

7



Elm St
 Depth (Max): 0.5 ft
 Velocity (Max): 0.7 ft/sec
 Arrival Time: 4hr, 30min
 Arrival Time (Max): 9hr, 34min

Legend

-  1000-yr Storm Day Dam Failure Inundation Boundary
-  1000-yr Storm Day No Dam Failure Inundation Boundary
-  Sunny Day No Dam Failure Inundation Boundary

CLIENT:
 VTDEC - DAM SAFETY
 WATER INVESTMENT DIV.
 1 NATIONAL LIFE DRIVE
 MONTPELIER, VT 05620



**INUNDATION MAP
 SHADOW LAKE DAM PROJECT**

DESIGNED BY:
 AF
 APPROVED BY:
 DRAWN BY:
 AF
 CHECKED BY:

PROJECT NO:
 127862L1
 DATE:
 01/30/2023

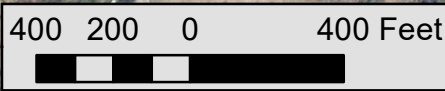
FIGURE NO:
8

32 Glover Rd, Barton
 Depth (Max): 7.5 ft
 Velocity (Max): 3 ft/sec
 Arrival Time: 4hr, 22min
 Arrival Time (Max): 9hr, 30min

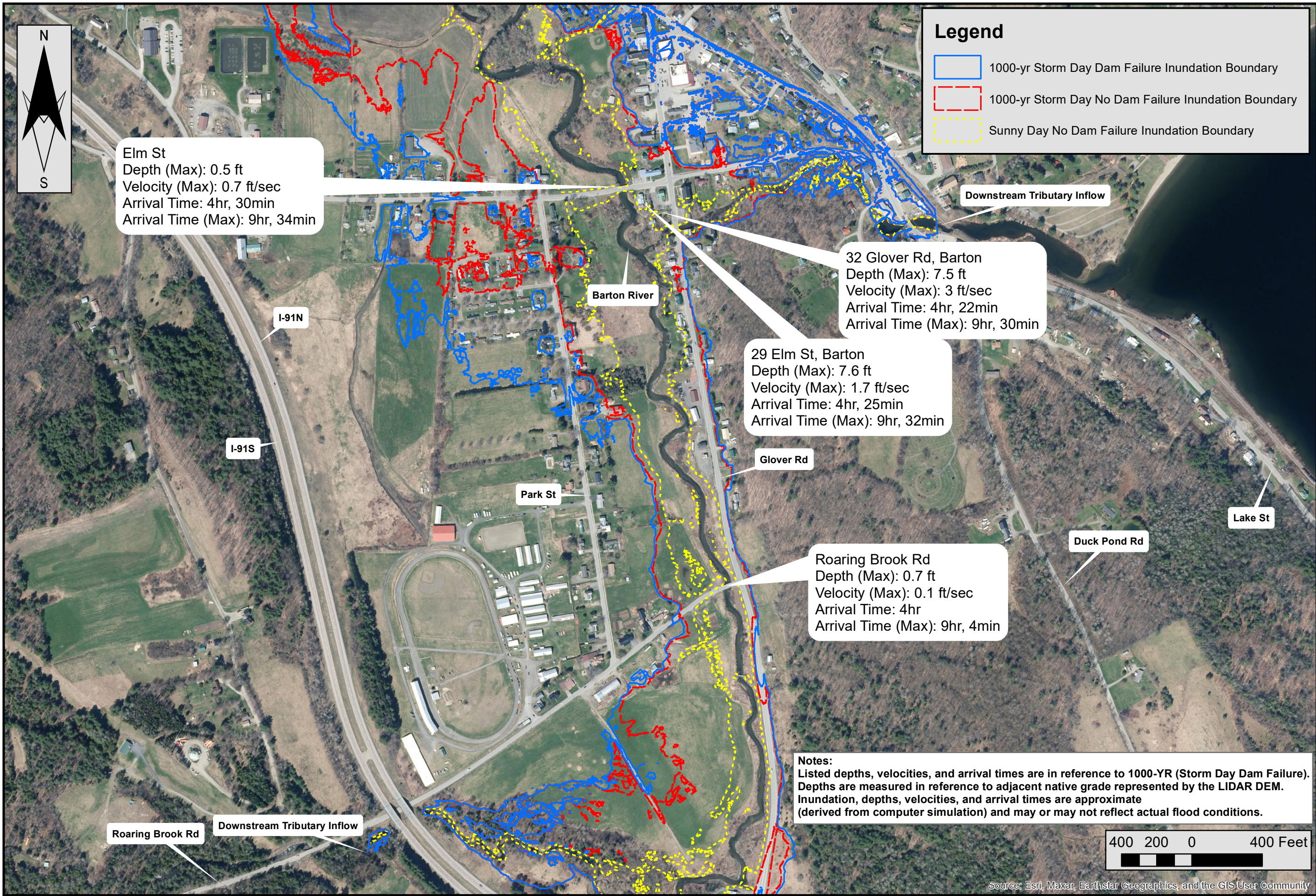
29 Elm St, Barton
 Depth (Max): 7.6 ft
 Velocity (Max): 1.7 ft/sec
 Arrival Time: 4hr, 25min
 Arrival Time (Max): 9hr, 32min

Roaring Brook Rd
 Depth (Max): 0.7 ft
 Velocity (Max): 0.1 ft/sec
 Arrival Time: 4hr
 Arrival Time (Max): 9hr, 4min

Notes:
 Listed depths, velocities, and arrival times are in reference to 1000-YR (Storm Day Dam Failure).
 Depths are measured in reference to adjacent native grade represented by the LIDAR DEM.
 Inundation, depths, velocities, and arrival times are approximate
 (derived from computer simulation) and may or may not reflect actual flood conditions.



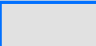
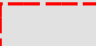

Source: Esri, Maxar, Earthstar Geographics, and the GIS User Community

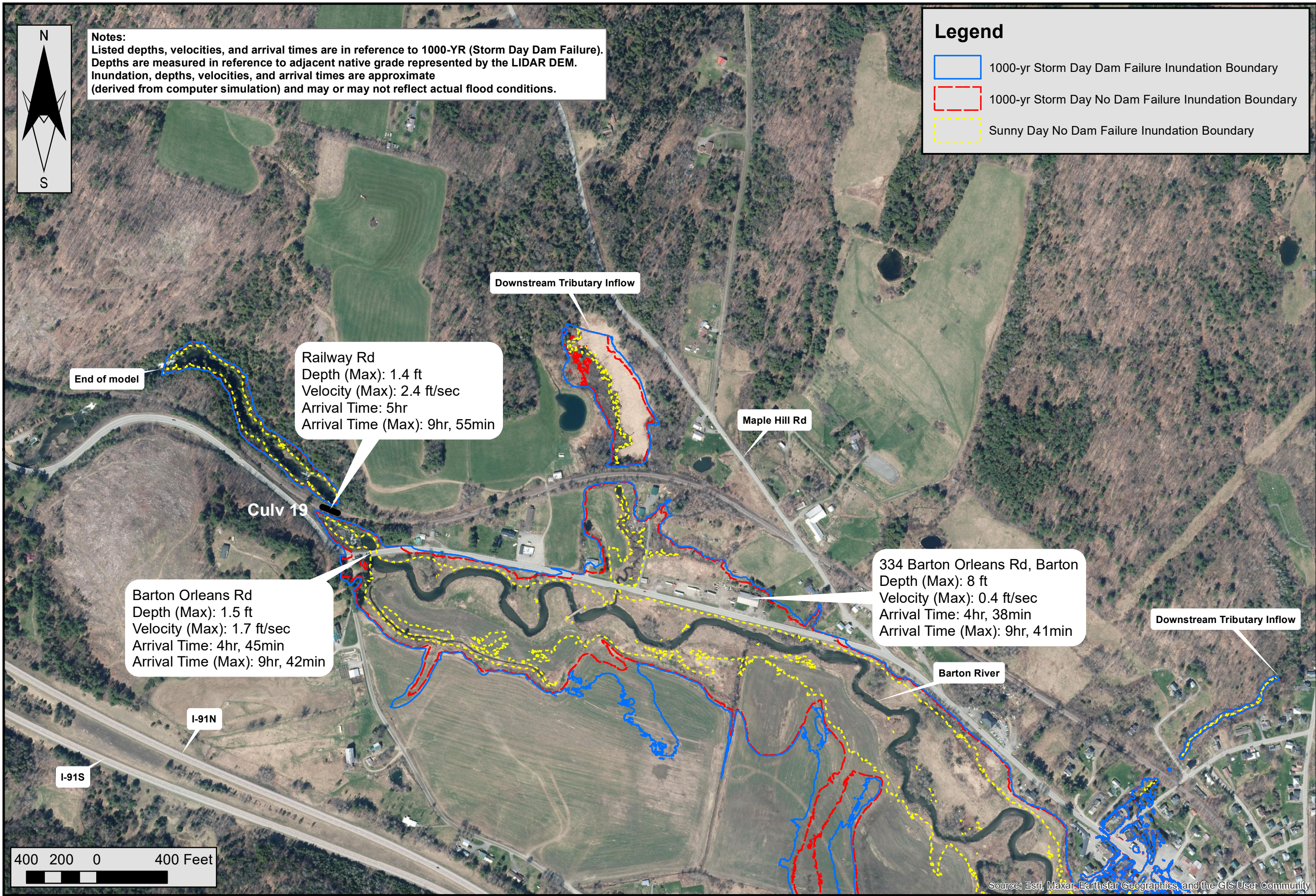




Notes:
 Listed depths, velocities, and arrival times are in reference to 1000-YR (Storm Day Dam Failure).
 Depths are measured in reference to adjacent native grade represented by the LIDAR DEM.
 Inundation, depths, velocities, and arrival times are approximate
 (derived from computer simulation) and may or may not reflect actual flood conditions.

Legend

-  1000-yr Storm Day Dam Failure Inundation Boundary
-  1000-yr Storm Day No Dam Failure Inundation Boundary
-  Sunny Day No Dam Failure Inundation Boundary



Railway Rd
 Depth (Max): 1.4 ft
 Velocity (Max): 2.4 ft/sec
 Arrival Time: 5hr
 Arrival Time (Max): 9hr, 55min

Barton Orleans Rd
 Depth (Max): 1.5 ft
 Velocity (Max): 1.7 ft/sec
 Arrival Time: 4hr, 45min
 Arrival Time (Max): 9hr, 42min

334 Barton Orleans Rd, Barton
 Depth (Max): 8 ft
 Velocity (Max): 0.4 ft/sec
 Arrival Time: 4hr, 38min
 Arrival Time (Max): 9hr, 41min



CLIENT:
 VTDEC - DAM SAFETY
 WATER INVESTMENT DIV.
 1 NATIONAL LIFE DRIVE
 MONTPELIER, VT 05620



**INUNDATION MAP
 SHADOW LAKE DAM PROJECT**

DESIGNED BY:
 AF

APPROVED BY:

DRAWN BY:
 AF

CHECKED BY:

PROJECT NO:
 127862L1

DATE:
 01/30/2023

FIGURE NO:

9